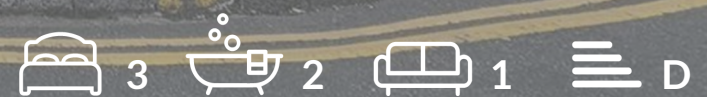




OAKFIELD



Royal Parade, Eastbourne
£1,395 Per Calendar Month



Royal Parade, Eastbourne

Set within the highly desirable Metropole Court, this beautifully refurbished three-bedroom apartment with wonderful views over Eastbournes Vibrant Seafront.

The apartment offers a bright and spacious living room filled with natural light leading to the well positioned balcony, a brand-new kitchen with sleek fittings and integrated appliances, and two double with third single. Further benefitting from a main bathroom and second shower room.

Perfectly positioned close to the seafront, local shops, cafés and excellent transport connections, this home offers the very best of Eastbourne living. With its fresh interiors and enviable location.

Please note:
An annual household income of £42,000 per annum is required.





Living Room

19'0" x 9'6" (5.8 x 2.9)

Hall

14'9" x 19'0" (4.5 x 5.8)

Kitchen

13'9" x 5'6" (4.2 x 1.7)

Bedroom One

17'8" x 9'6" (5.4 x 2.9)

Bedroom Two

13'5" x 11'9" (4.1 x 3.6)

Bedroom Three

13'1" x 6'6" (4 x 2)

Bathroom

5'6" x 8'6" (1.7 x 2.6)

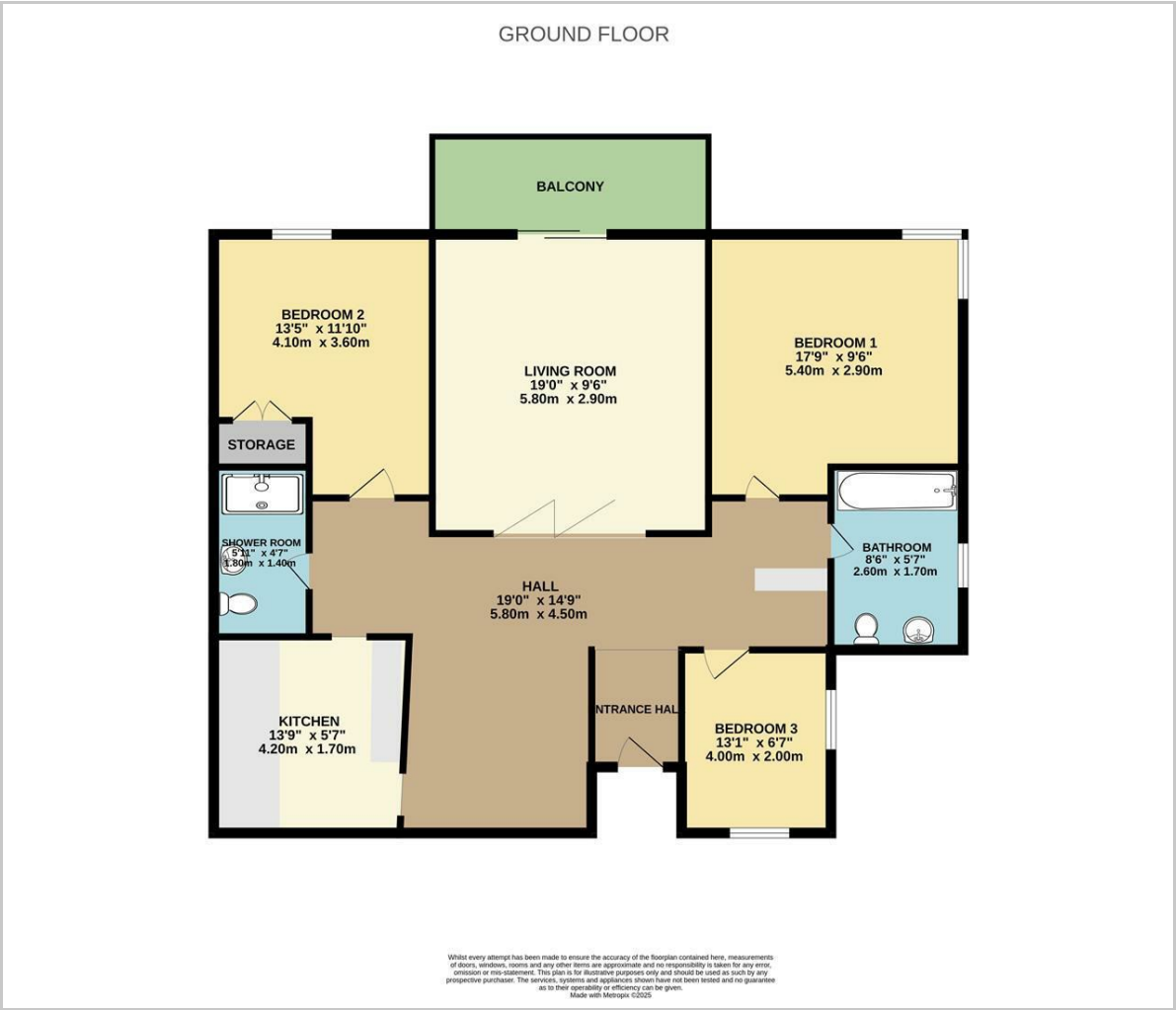
Shower Room

4'7" x 5'10" (1.4 x 1.8)

Council Tax Band C - £2051.34 per anum



Floor Plan

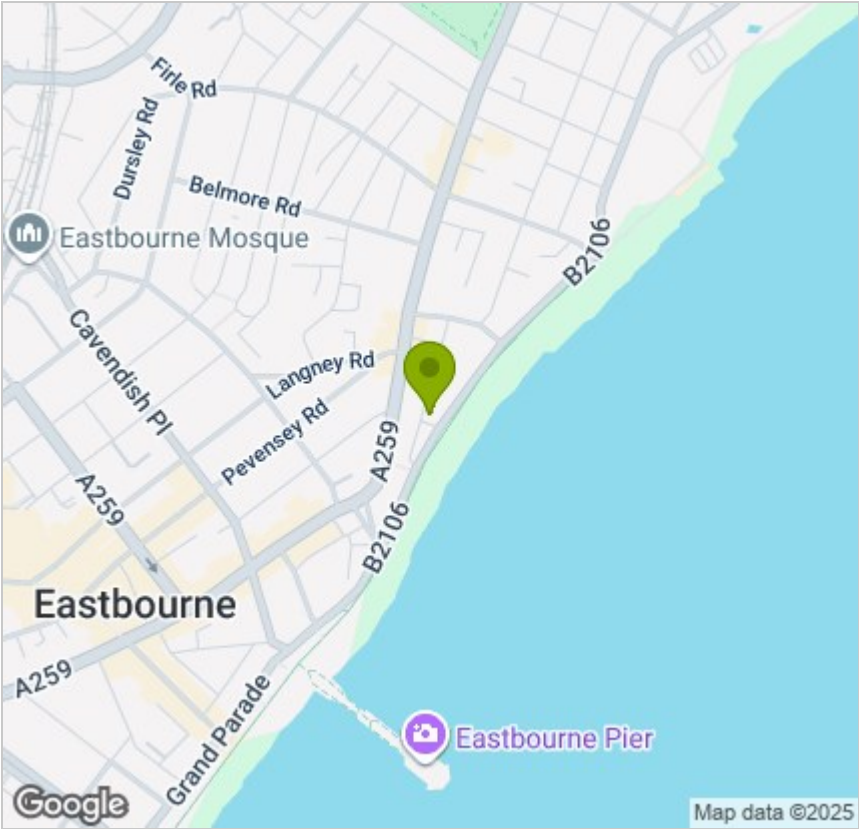


Viewing

Please contact us on 01323 405553 if you wish to arrange a viewing appointment for this property or require further information.

These particulars, whilst believed to be accurate are set out as a general outline only for guidance and do not constitute any part of an offer or contract. Intending purchasers should not rely on them as statements of representation of fact, but must satisfy themselves by inspection or otherwise as to their accuracy. No person in this firms employment has the authority to make or give any representation or warranty in respect of the property.

Area Map



Energy Efficiency Graph

